





**ANANT  
SIDDHI**  
BHANDUP (W)

LOREM IPSUM DOLOR SIT AMET, CONSECTETUER ADIPISCING ELIT, SED DIAM NONUMMY NIBH EUISMOD TINCIDUNT UT LAOREET  
DOLORE MAGNA ALIQUAM ERAT VOLUTPAT. UT WISI ENIM AD MINIM VENIAM, QUIS NOSTRUD EXERCITATION ULLAMCORPER SUSCIPIIT  
LOBORTIS NISL UT ALIQUIP EX EA COMMODO CONSEQUAT. DUIS AUTEM VEL EUM IRIURE DOLOR IN HENDRERIT IN VULPUTATE VELIT  
ESSE MOLESTIE CONSEQUAT, VEL ILLUM DOLORE EU FEUGIAT NULLA FACILISIS AT VERO EROS ET ACCUMSAN ET IUSTO ODIO DIGNIS

DWELL IN A  
*Divine Presence*





# 200 YEARS OF *Trust & Devotion*

The 200 years old Anant Nath Trust runs the revered **Lord Adinath Jain temple** which is more than 75 years old. The Trust was founded on the basic principles of **'Ashta Prabhavnas' or the 'Eight Prabhavnas'**, which are integral to the Jain philosophy and are the guiding light on the path of righteousness and ethical living. These very principles are the inspiration behind the Anant Nath Trust to develop a sacred sanctum for a religious, self-disciplined, like-minded community.





## *Samyaktva* PRABHAVANA

Right faith is considered to be the foundation of spiritual growth in Jainism. The firm conviction and a strong belief in the Samyaktva Prabhavna has been the driving force behind the Anant Nath Trust to lay the foundation of a spiritual haven shielded by the heavenly aura of the lord Adinath Jain temple.



## *Charitra* PRABHAVANA

The Jain code of conduct emphasizes non-violence, truthfulness, non-stealing, chastity, and non-attachment. The Charitra Prabhavna has been the motivation behind the Anant Nath Trust to form an ideal society where the Right Code of Conduct is followed religiously in pursuit of spiritual upliftment.





## *Dharma Sattva* PRABHAVANA

It is the deep devotion and faith of the Anant Nath Trust in the religious teachings of the Jain philosophy which has been the idea behind developing one of the most premium residential landmarks surrounded by the divine aura of a revered pilgrimage site.



## *Arya Sattva* PRABHAVANA

The Arya Sattva Prabhavna cultivates noble intentions and purity of thoughts. The chief principles of Arya Sattva Prabhavna reinforces the unwavering commitment of the Anant Nath Trust in delivering what has been promised within the stipulated timeline.







## *AMRITA Sattva* PRABHAVANA

The Amrita Sattva Prabhavna advocates maintaining honesty and sincerity in one's intentions at all times. This has been the basis of the Anant Nath Trust to work with honest and sincere intentions and adhere to the quality specifications from building material to fixtures and fittings as per their commitment.

## *Samyama Sattva* PRABHAVANA

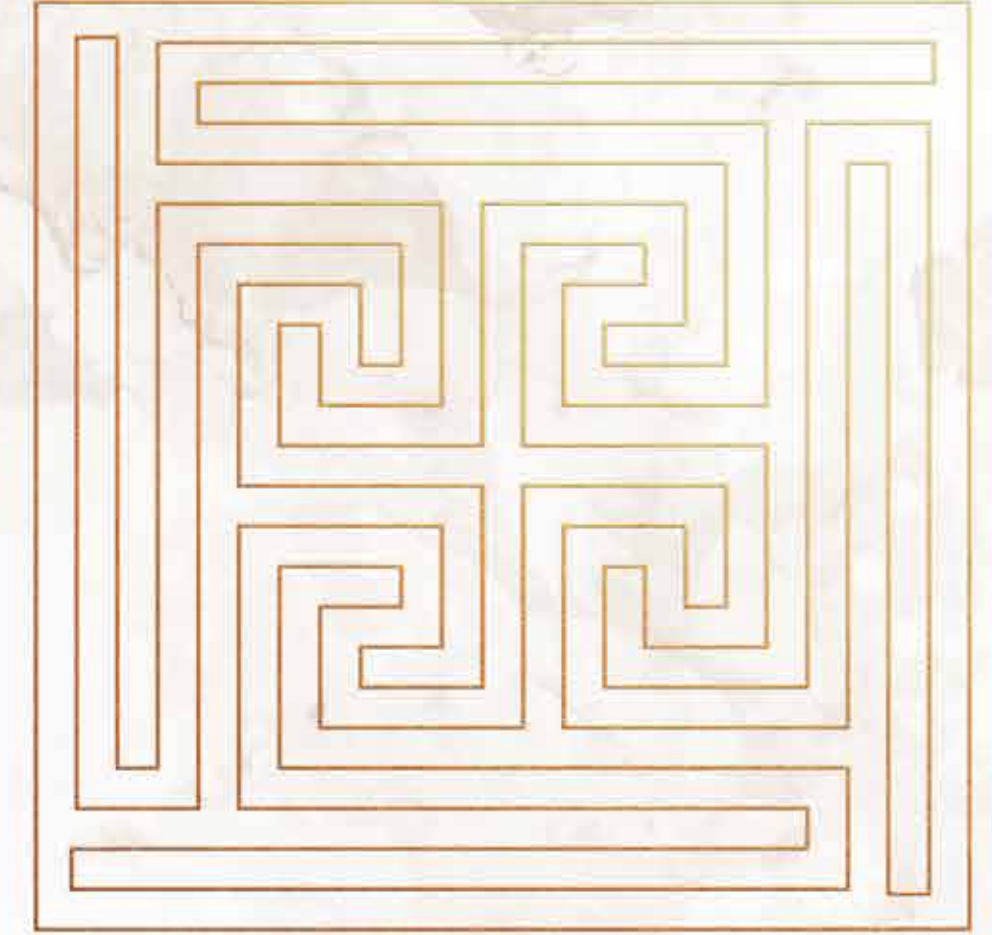
The Samyama Sattva Prabhavana stresses upon exercising self-restraint and control over desires and senses, which requires stern self-discipline and ascetic control. The Trust endorses this practice of the Jain community and has exclusively dedicated spaces to spiritual activities including, Yoga, Meditation, and tranquil spaces devoid of any external disturbances.





## *Mardava Sattva* PRABHAVANA

Mardava Sattva Prabhavna fosters developing a sense of modesty and humility. The Anant Nath Trust resonates this notion by way of its actions and endeavours which are aimed at benefiting the Jain community through 'Service without Expectations'.



## *Kshama Sattva* PRABHAVANA

Kshama Sattva Prabhavana cultivates the quality of forgiveness and forbearance. The ability to pardon and the quality of being tolerant are the traits of either the strongest or the supreme. With unequivocal accordance with this principle of the Jain ethos, The Anant Nath Trust has practiced true kindness, compassion and forgiveness since the time of its existence.



INTRODUCING  
**ANANT  
SIDDHI**  
BHANDUP (W)  
1, 2 & 2.5 BHK  
SPACIOUS RESIDENCES

Welcome home to Anant Siddhi. A distinctive and remarkable residential landmark by the Anant Nath Trust at Bhandup (W), with G+39 storeyed high-rise offering 2 and 2.5 BHK spacious residences. The towering edifice accommodates 5 homes on each floor fostering a safe and cordial community living. Mesmerizing views of Thane Creek & Powai Lake can be admired from higher floors. Located at one of the most prime locations of Bhandup West, Anant Siddhi offers excellent connectivity to Navi Mumbai, Thane and Mumbai through both road and rail networks.





# A SURREAL BLEND OF *Convenience & Comfort*

Boasting the reputation of western Mumbai's new found affordable suburb, Bhandup (W) offers excellent locational advantages and serves as a coveted residential address. The location offers ease of access to every significant destination from excellent healthcare facilities, quality education to a number of shopping hubs.

## COMMERCIAL HUB

Eastern Business District (EBD)	400 m
Kailash Complex, Filix Centre	400 m

## SCHOOLS & COLLEGE

NES International School	200 m
Pawar Public School	200 m
G S Shetty Int School	200 m
DAV College, Menon College	1 km

## RETAILS & SHOPPING MALLS

Metro cash & carry, Vijay Sales, Croma	400 m
D mart (Mulund & Kanjurmarg )	2 km
Upcoming D Mart opp. Anant Siddhi	50 m

## MARKET

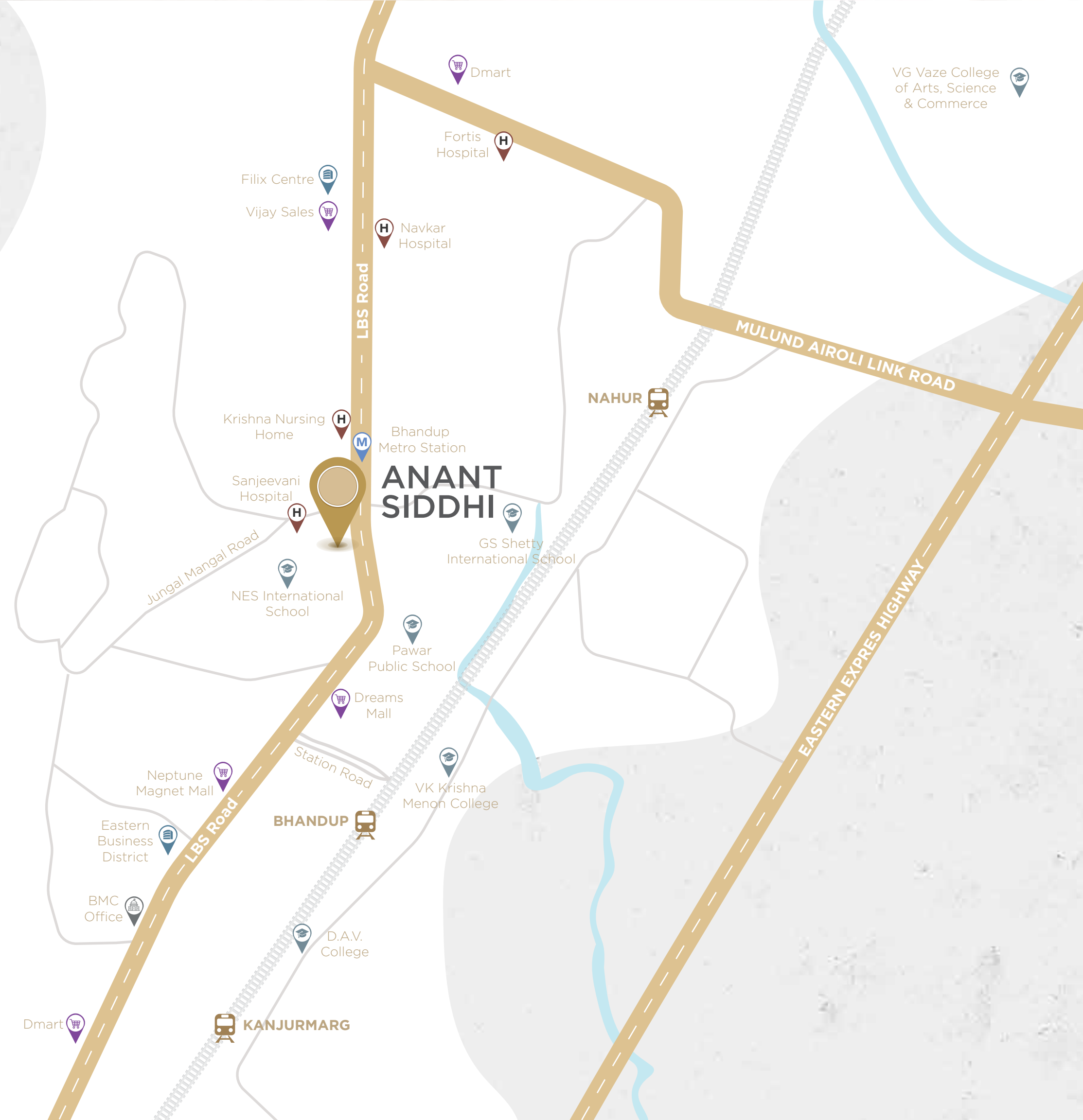
Jangal Mangal Road	100 m
Station Road	200 m

## METRO STATION

Bhandup Metro Station	100 m
-----------------------	-------

## HOSPITALS

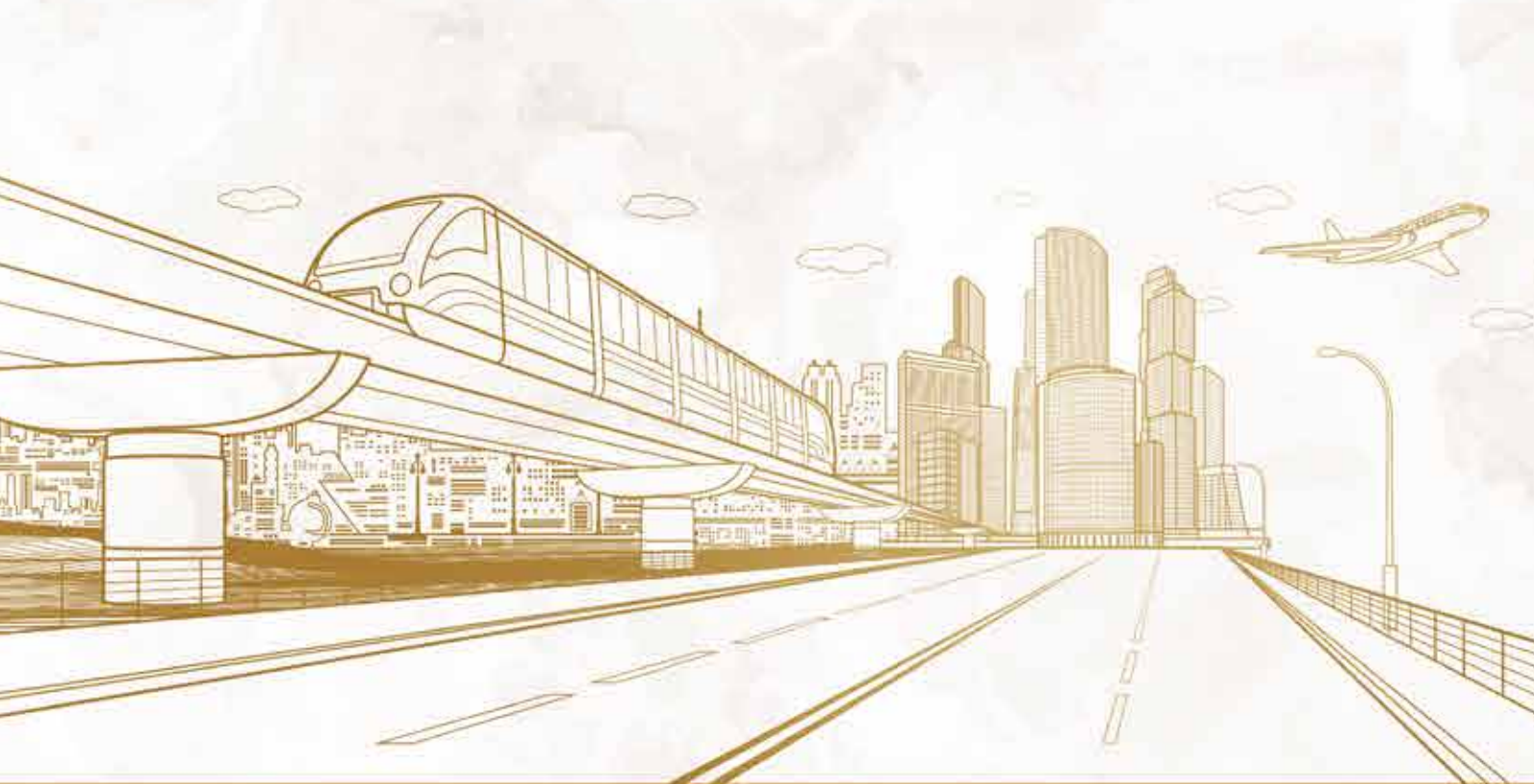
Krishna Nursing Home	200 m
Navkar Hospital	300 m
Sanjivani Hospital	100 m
Fortis Hospital	2 km





# SPIRITUAL SOLACE WITH *Seamless connectivity*

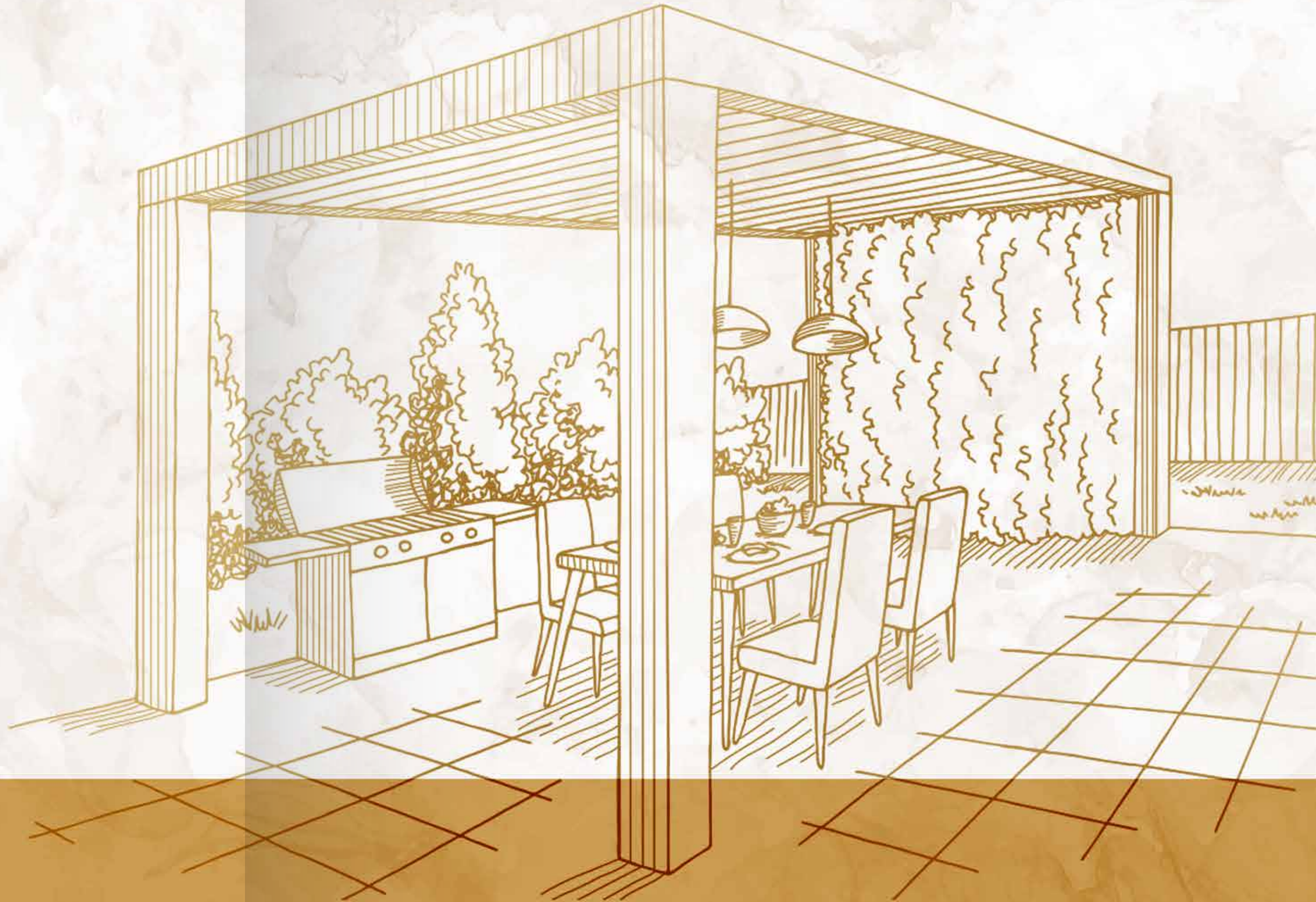
An address blessed with spiritual peace and harmony, Anant Siddhi at Bhandup (W) offers smooth connectivity to every significant destination in the city including Powai, Navi Mumbai, Thane and Mumbai through Eastern Express Highway. Bhandup also serves as a Railway Station on the Central Line of the Mumbai Suburban Railway network between Kanjur Marg and Nahur.





# EMBRACE HOLISTIC LIVING AMIDST *Indulgences Abound*

A holistic lifestyle welcomes you at Anant Siddhi enriched with the comforts of modern living and complemented with the divine joys of Jain traditions. Embrace a lifestyle where select and unmatched amenities are routine, as Anant Siddhi invites you to experience the perfect synthesis of modern luxury and holistic well-being.





# REVEL IN THE ETHEREAL BLEND OF *Modernity with Divinity*

Cherish a wholesome life endowed with the comforts and luxuries of city living blend seamlessly with divine serenity. Enjoy an array of state-of-the-art indoor amenities, thoughtfully planned with every detail meticulously crafted to enhance your life.

- Library Room
- Banquet / Party Hall with Kitchen Area
- Fitness Centre
- Indoor games: Table Tennis, Carom, Chess, Snooker.
- Gymnasium
- Jacuzzi





# MARVEL AT THE MARRIAGE OF *Nature and Luxury* UNDER THE BLUE SKIES

Experience an exclusive lifestyle where the bustle of city life perfectly integrates into the luxury of rejuvenating outdoor amenities with the azure skies as the backdrop. Life at Anant Siddhi provides an escape from the real world to a reverie of delight to last a lifetime.

- Activity / Yoga / Meditation / Gazebo centre
- Dada - Dadi Area
- Kids' Play Area
- Open Party Get-together Area
- Rooftop Seating Area





# Explore the brilliance OF STATE-OF-ART TECHNOLOGY

Immerse yourself in the awe-inspiring blend of contemporary technology with creative intellect offering you a safe and secured lifestyle where the extraordinary becomes the new norm.

- Designer Entrance Double Height Lobby.
- Earthquake Resistance Structural Design
- High Speed Lifts
- Guest Room in Complex
- CCTV in common Area
- Fire Fighting Systems
- DG Set (Power Backup)





# PERFECTLY PLANNED SPACES FOR A *Perfect Living Experience*

Every home at Anant Siddhi has been ergonomically designed to ensure optimal utilization of space for an unparalleled living experience that leaves nothing to be desired. Bathed in abundant natural sunlight and cross-flow ventilation, every nook and cranny receives its rightful share of illumination and fresh air.





# TYPICAL FLOOR PLAN

UNIT NO.	BHK	CARPET AREA
1	1.5 BHK	438 sq. ft.
2	2 BHK	709 sq. ft.
3	2 BHK	792 sq. ft.
4	2 BHK	709 sq. ft.
5	1.5 BHK	438 sq. ft.





# *Specifications*

- 3 x 3 Vitrified Flooring Tiles
- Jaguar / Equivalent CP Fittings
- Jaguar / Kohler / Grohe / Equivalent Sanitary.
- Switches ( Anchor / Roma / Legrand /Equivalent)
- UPVC Windows

